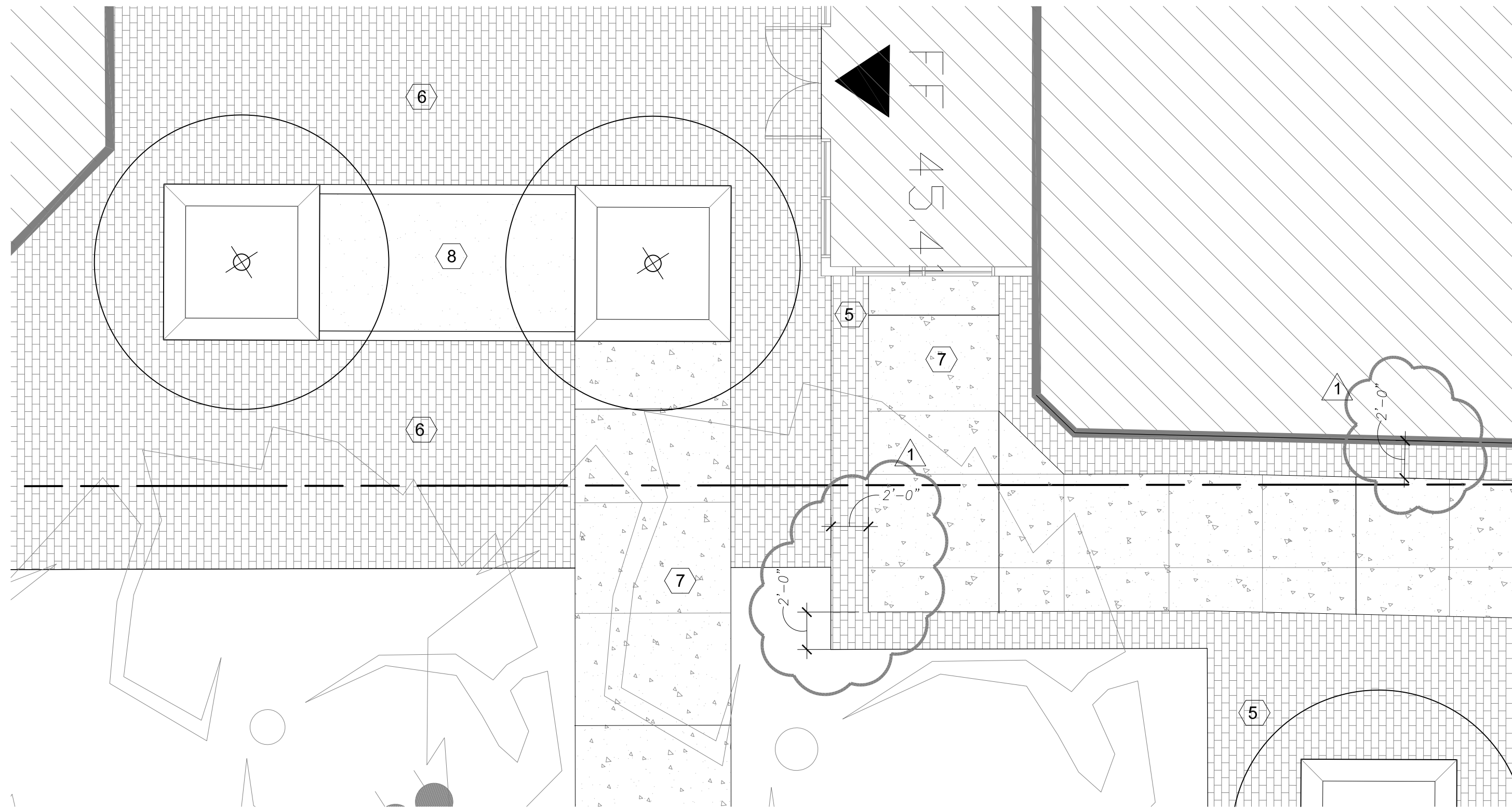
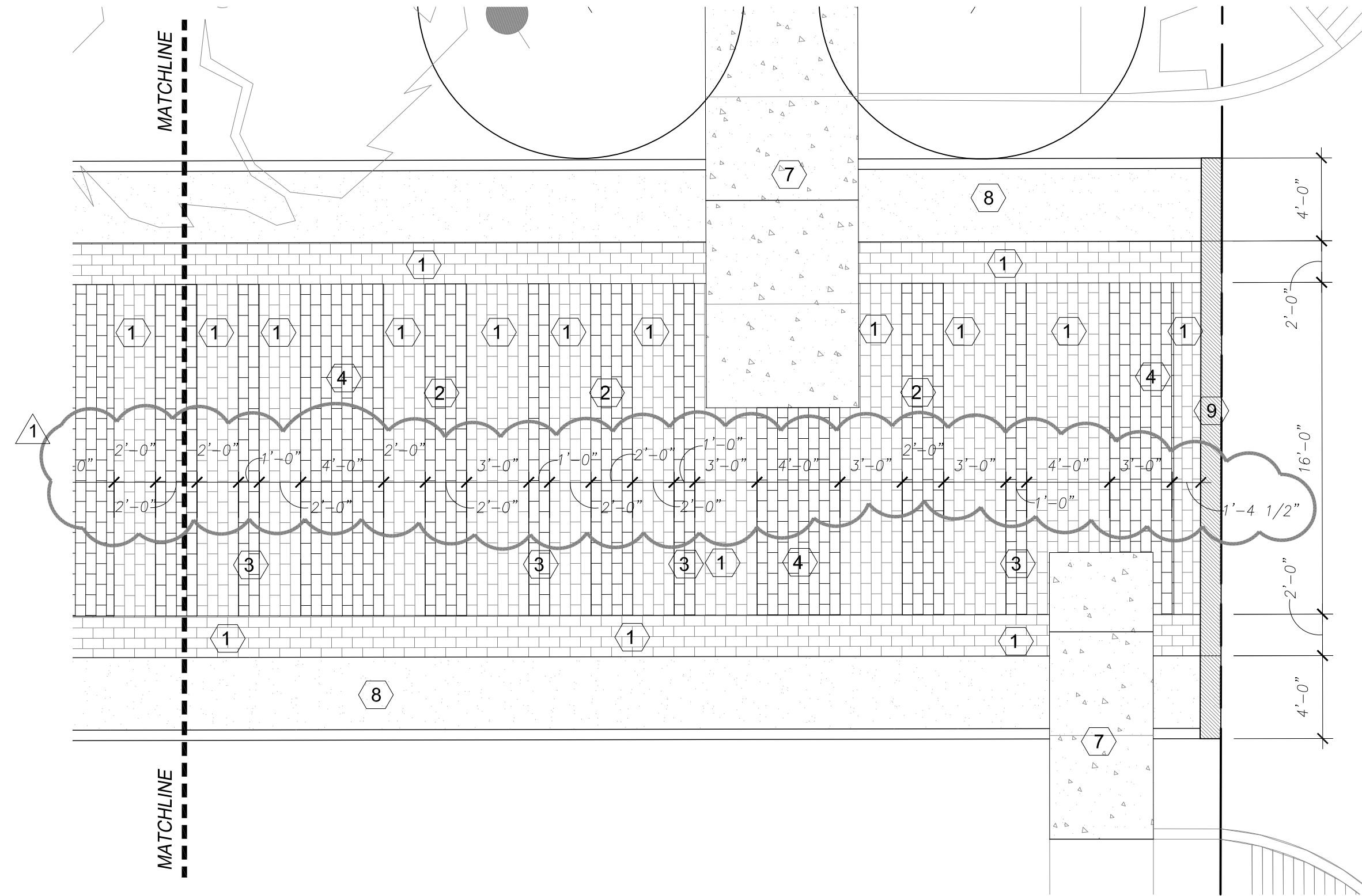


PAVER COLOR KEY:

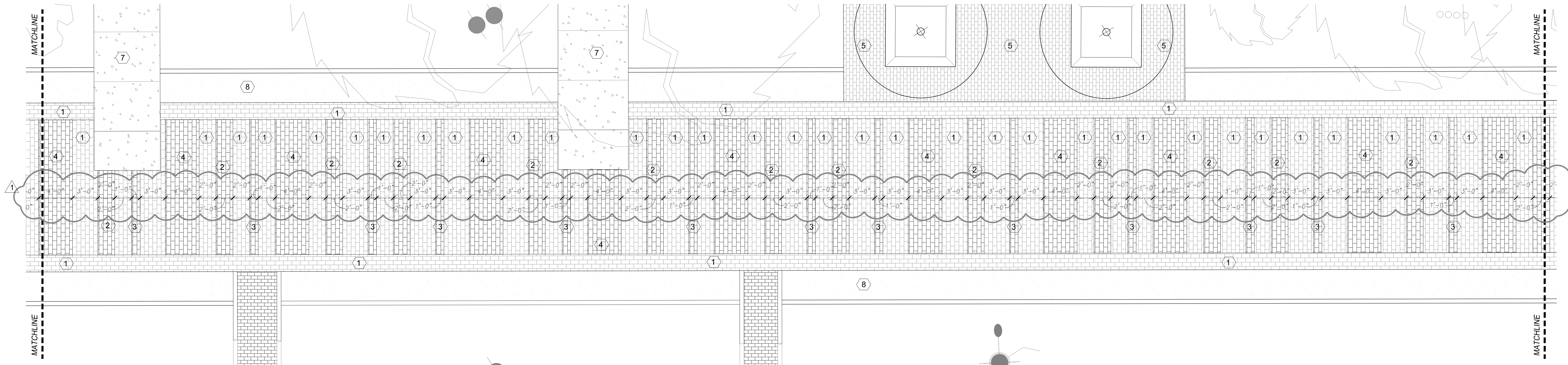
- 1 PEWTER
- 2 CHARCOAL
- 3 LIMESTONE
- 4 LIGHT BROWN
- 5 ANTIQUE PETWER BLEND
- 6 ANTIQUE BROWN BLEND
- 7 BROOM FINISH CONCRETE
- 8 DECOMPOSED GRANITE
- 9 ROLLED CONCRETE CURB



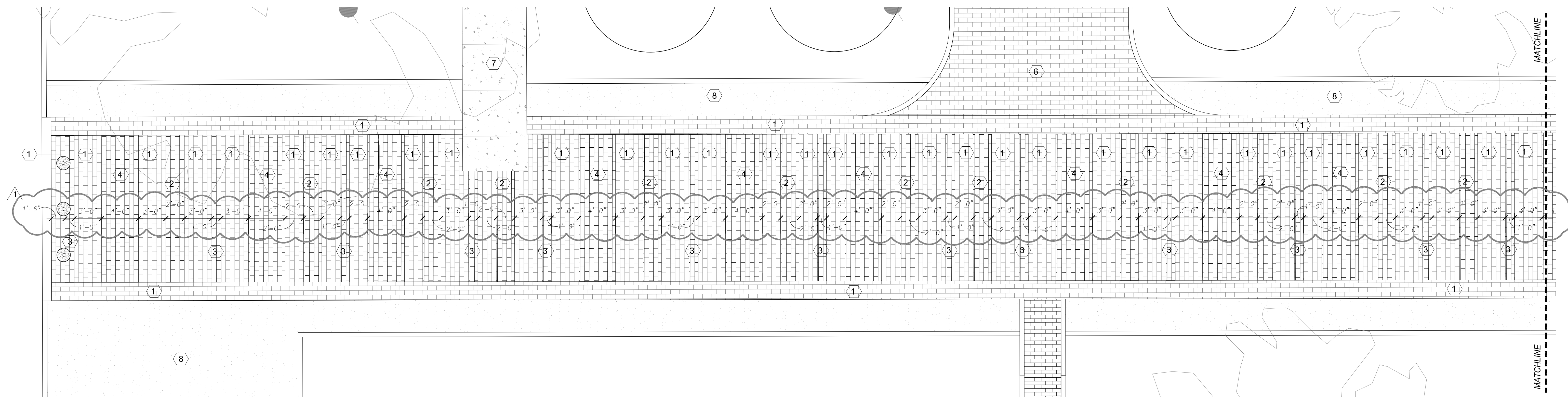
20 Detail Paving Plan  
SCALE: 3/16" = 1'-0"



7 Detail Paving Plan  
SCALE: 3/16" = 1'-0"



18 Detail Paving Plan  
SCALE: 3/16" = 1'-0"

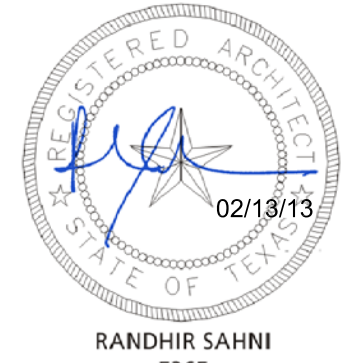


17 Detail Paving Plan  
SCALE: 3/16" = 1'-0"



Houston  
Community  
College

HCC - Construction Department  
3100 Main, 12th Floor  
Houston, Texas, 77002  
Voice: 713.718.5168  
reynaldo.pradia@hccs.edu



Issue/Revision:

REV	DESCRIPTION	DATE	BY
1	Owner Review	10/13/11	
2	QA/QC Review	11/29/11	
3	Owner Approval	12/14/11	
4	Issued for Permit	11/6/12	JA
5	Issued for Bid	11/2/12	JA
6	Addendum #1	2/13/13	JA



5120 Woodway Dr., Ste. 8010  
Houston, Texas 77056-1733  
P 713.850.1500  
F 713.850.1033  
www.hdsd.net  
info@hdsd.net



ENGINEERS SCIENTISTS PLANNERS & ARCHITECTS  
7120 GRAND BOULEVARD, SUITE 100  
HOUSTON, TEXAS 77054  
(713) 680-0080 FAX (713) 680-0759  
18% FIRM NO. 7-02028

ENVIRONMENTS & CO  
ARCHITECTURE • INTERIORS • LANDSCAPE • PLANNING  
21550 Provincial Blvd., Bldg. 4, #413 Katy, Texas 77450  
281-759-1513 ph 281-759-1723 fx

STUDIO OF RICHARD JETER MFA  
LIGHTING DESIGNER  
1903 FESSEL BEND DR.  
HOUSTON, TEXAS 77058

E&C  
E&C Engineers & Consultants Inc.  
1010 Lamar, #650  
Houston, Texas 77002  
713.580.8800  
713.580.8888 Fax

ASA Dally  
STRUCTURAL ENGINEERS  
1155 Dairy Ashford Street, Suite 111  
Houston, TX 77079 1281 531 4401

Central Campus  
La Branch Street Improvements

1300 Holman Street  
Houston, TX 77004

Contract No.:  
Drawn By: XX  
Checked By:  
Approved By:

A/E Project No.:  
Date: XX/XX/XX  
Date:  
Date:

Overship of Instruments of Service:  
All reports, plans, specifications, computer files, field data,  
notes & other documents and instruments prepared for  
Houston Community College as instruments of service  
shall become the property of Houston Community  
College. Houston Community College shall gain all  
common law, statutory and other reserved rights,  
including the copyright thereto.

Paving Pattern  
Plan

Scale: 3/16" = 1'-0"

AS-1.30